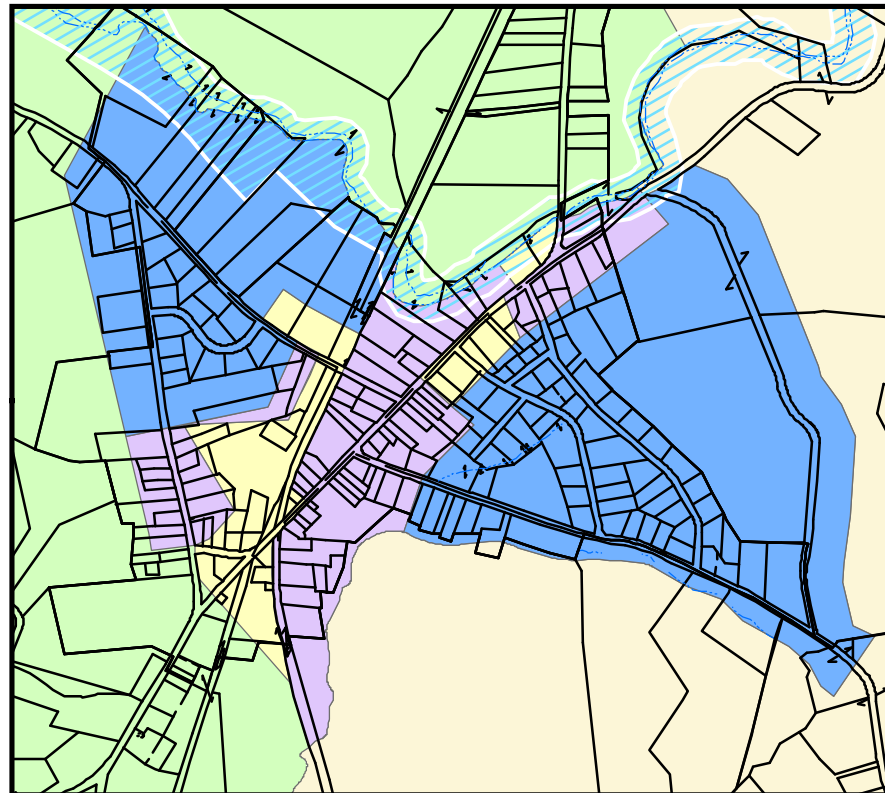
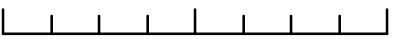


ZONING MAP PREPARED FOR THE TOWN OF GHENT

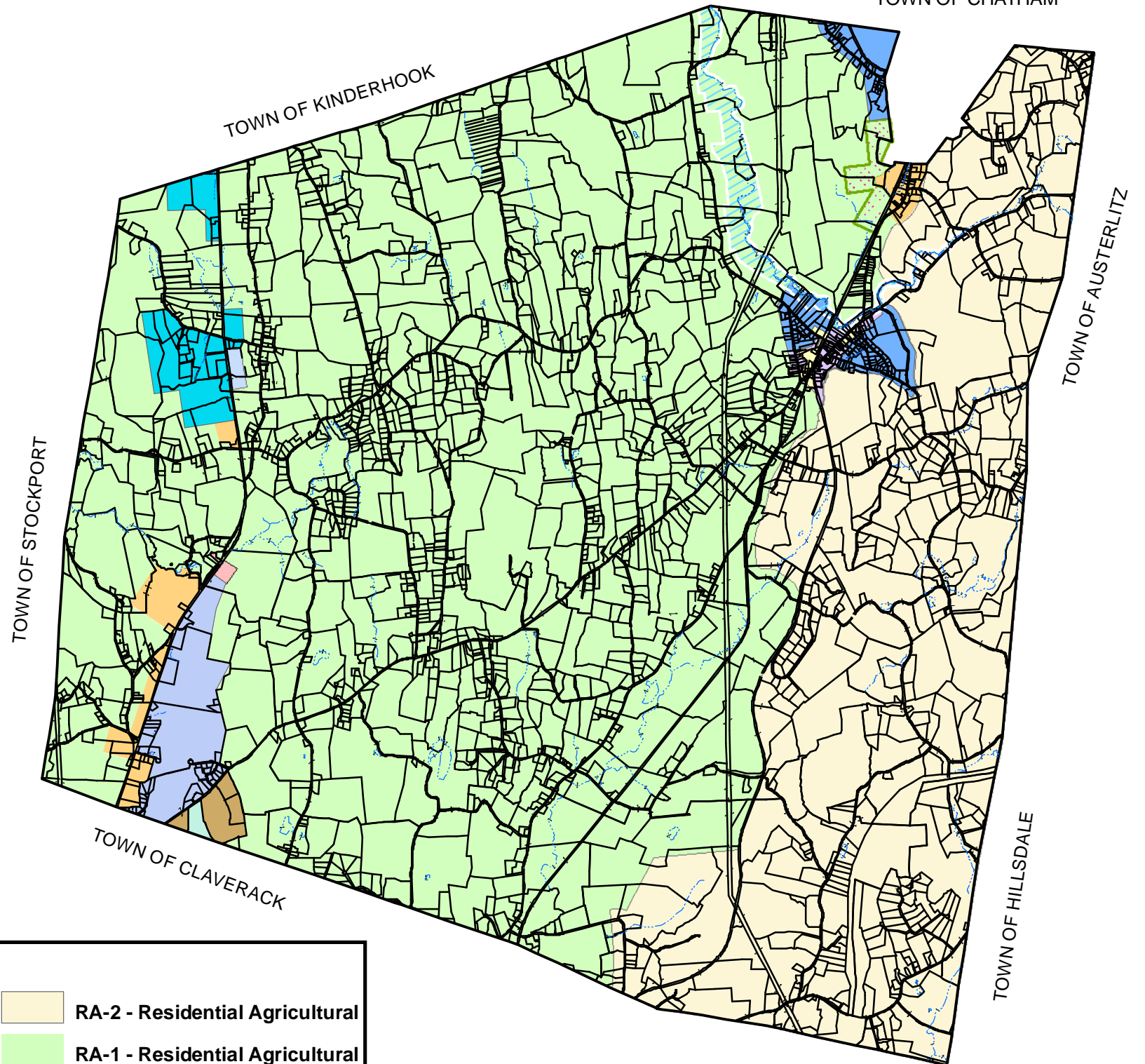
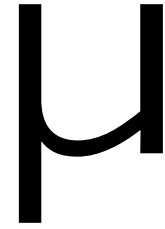
HAMLET INSET



0.25 0.125 0 0.25 Miles



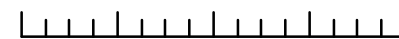
1 inch equals 0.25 miles



Legend

- | | | |
|-----------------------------------|--|---------------------------------|
| FAO - Flood Area Overzone | CI-3 - Commercial Industrial | RA-2 - Residential Agricultural |
| BC - Business/Commercial | BIC - Business Industrial Complex | RA-1 - Residential Agricultural |
| SR - Suburban Residential | VR - Village Residential | Town Boundary |
| LCB - Limited Commercial Business | VB - Village Business | Tax Parcel Boundaries |
| CI - Commercial Industrial | PCID overzone | Water |
| CI-2 - Commercial Industrial | PCID - Planned Commercial Industrial Development | |

0 0.5 1 1.5 2 Miles



1 inch equals 1 miles

Map updated August 19, 2010
to reflect current Zoning District Boundaries

MORRIS ASSOCIATES
ENGINEERING CONSULTANTS, PLLC
64 Green Street, Suite 1 Hudson, NY 12534
Tel: (518) 828-2300 Fax: (518) 828-3963